

## BIBLIOGRAPHY

- Faustina, F. C., & Santoso, F. (2017). Ekstraksi dan pengamatan aktivitas antioksidan dan antimikroba dari kulit buah *Pometia pinnata*. *Jurnal Penelitian Pascapanen Pertanian*, 11(2), 80-88. <http://dx.doi.org/10.21082/jpasca.v11n2.2014.80-88>.
- Nuryadi, A. M., Silaban, D. P., Manurung, S., & Apriani, S. W. (2019). Pemanfaatan buah matoa sebagai cita rasa es krim yang baru. *Jurnal Penelitian Teknologi Industri*, 11(2), 55-62. <http://dx.doi.org/10.33749/jpti.v11i2.5636>.
- Siswanto, B., & Ernawati, F. (2013). Peran beberapa zat gizi mikro dalam sistem imunitas. *Gizi Indon*, 36(1), 57-64. <https://doi.org/10.36457/gizindo.v36i1.116>.
- Sudarmonowati, E., Bachtiar, A. S., & Yunita, E. (1995). Propagasi *Pometia pinnata* secara in vitro. *Tanaman Hortikultura Menuju Ketahanan Pangan*, 1-10. <http://scholar.unand.ac.id/29767/4/daftar%20pustaka.pdf>.
- Surya, A. (2018). Toksisitas ekstrak daun matoa (*Pometia pinnata*) terhadap larva (*Artemia salina* L) dengan metode brine shrimp lethality test. *Jurnal Analisis Kesehatan Klinikal Sains*, 6(1). <http://jurnal.univrab.ac.id/index.php/klinikal/article/view/526>.
- S. Methakhup, N. Chiewchan, S. Devahastin Effects of drying methods and conditions on drying kinetics and quality of Indian gooseberry flake LWT-*Food Sci. Technol.*, 38 (2005). <https://www.sciencedirect.com/science/article/pii/S002364380400235X>.
- S. Koukel, 2009. *Fruit Leather*. University of Alaska-Fairbanks Cooperative Extension. [https://cespubs.uaf.edu/index.php/download\\_file/1044/](https://cespubs.uaf.edu/index.php/download_file/1044/).

## APPENDIX

### Desain And Logo Of Packaging



Figure 34. Logo



Figure 35. Front Packaging sticker

Figure 36. Back Packaging Sticker

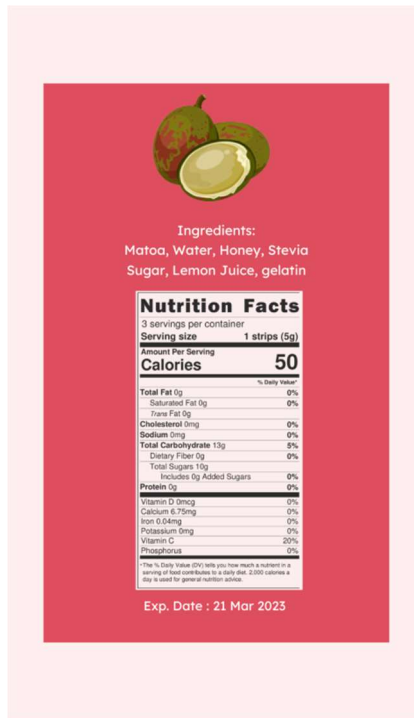


Figure 37. Product Packaging



## Supplier List

Table 9. Supplier List

No	Ingredients	Unit Price	Supplier
1	Matoa Fruit	Rp. 35.000/kg	Pasar Buah, Jombang
2	Honey	Rp. 79.500/350 ml	Tobaku, Dukuh kupang
3	Water	Rp. 3.000/600 ml	Indomaret
4	Stevia Sugar	Rp. 67.500/130 gr	Tobaku, Dukuh Kupang
5	Gelatin Powder	Rp.27.000/100 gr	Tobaku, Dukuh Kupang
6	Lemon Juice	Rp. 49.000/500 ml	Tobaku, Dukuh Kupang
7	Packaging	Rp. 22.000/100 pcs	Tobaku Dukuh Kupang
8	Sticker	Rp. 10.000/100 pcs	Prima Digital Printing

## Scanned Approved Recipe



Akademi Kuliner & Patiseri  
**OTTIMMO**  
 INTERNASIONAL  
LEASHPARTY 4874 - CATERING/PAstry - BAKING & Pastry 4874

### CULINARY INNOVATION AND NEW PRODUCT DEVELOPMENT SENSORY TEST

**DATE** : 20 May 2022  
**NAME** : Josephine Monica  
**NIM** : 2074130010028  
**PRODUCT** : Matoa fruit leather  
**ADVISOR** : Ryan Yeremia Iskandar, S.S.

PANELIST	SIGHT	SMELL	TEXTURE	TASTE	TOTAL
Panelist 1	√	√	√	√	√
Panelist 2	√	√	X	√	√
Panelist 3	√	√	X	√	√
Panelist 4	√	X	X	X	X
Panelist 5	√	√	X	√	√
Panelist 6	√	√	X	√	√
Panelist 7	X	√	X	√	X
Panelist 8	√	√	√	√	√
Panelist 9	√	√	X	√	√
Panelist 10	√	√	X	√	√

**NOTES** :

- Mungkin bisa dibuat tdk terlalu keras dengan menambahkan cairan atau mengurangi waktu pemasakan
- Ketika produknya dipatahkan alot
- Leather too hard
- Still a bit to hard to chew on
- Too dry.. too hard ..is it true texture?
- Kurang chewy
- Texture a bit too hard to chew, possibly too thin in spreading



Figure 38. Scanned Approved Recipe

# Consultation Form



Academi Kuliner & Pastry  
**OTTIMO**  
 INTERNATIONAL

**CONSULTATION FORM**  
**RESEARCH AND DEVELOPMENT**  
**FINAL PROJECT**

No	Date	Topic Consultation	Name / Signature
1	17/10/22	Nutrition Facts	<i>[Signature]</i>
2	17/10/22	Product cost	<i>[Signature]</i>
3	17/10/22	Product	<i>[Signature]</i>
4	17/10/22	konsul con	<i>[Signature]</i>
5	19/10/22	konsul bab 4	<i>[Signature]</i>
6	19/10/22	konsul product	<i>[Signature]</i>

Name : Josephine Monica  
 Student Number : 2021132010028  
 Advisor : Rika Yentia

No	Date	Topic Consultation	Signature
7	19/10/22	Packaging	<i>[Signature]</i>
8	19/10/22	konsul Recipe	<i>[Signature]</i>
9	19/10/22	konsul bab 1-4	<i>[Signature]</i>
10	20/10/22	konsul formulation	<i>[Signature]</i>
11	21/10/22	Final Consultation	<i>[Signature]</i>

Figure 39. Consultation Form