

CHAPTER II

GENERAL DESCRIPTION OF COMPANY

2.1 History of Company

Tanrise Group is a company which specializes in building property and is part of the firm Tan Corporation. Founded in 2003 by Hermanto Tanoko, Tanrise Property began its journey by building a warehouse complex in Sidoarjo, East Java.

The high quality specification warehouse from Tanrise, named Tritan Point Warehouse, now become one of the most favorite warehouse in Indonesia. Starting with 11-hectares land for the first Tritan Point Warehouse in Central Square Sidoarjo, Tanrise gained its big homerun success and the units sold out only less than a year. Then they build another warehouse in Sidoarjo called Tanrise Central Square, Tanrise Westgate Diamond, Tanrise Southgate, Tanrise Tritan Taman, and Tritan Point Wedi. Not only at Sidoarjo, but Tanrise spread their wings and build another warehouse in Malang (Tritan Point K-Walk), Surabaya (Tritan Point Banyu Urip), Medan (Tritan Point Medan), and Bandung (Tritan Point Bandung).

Tanrise moved to build residential, apartment, hotels, shophouses, and high-rise office buildings across Indonesia. Such as Sunrise Garden residential at West Surabaya, three star hotel – Solaris Hotel at Malang City, three business hotel – Cleo Hotel at Surabaya, and finally they got expansion to make five stars modern hotel at West Surabaya call Vasa Hotel Surabaya. This 5.461 m² with 385 room capacity hotel is under the management of PT. De Vasa Indonesia.

PT. De Vasa Indonesia is a corporation that specialized and moved in industrial-tourism business. They provide accommodation in the form of professional services and hotels. Founded by Mr. Hermanto Tanoko as founder of Tanrise Group, the shareholder of PT. Avia Avian which moved in houses painting

since 1978, founder of building materials supermarket called DepoBuilding, and also owner of the Tanobel Food who run business on food and beverage section with their main product such as Cleo Pure Water, Anda, Anda Fruit Juice (in variety flavors), eNo Limit Energy Drink, Decoco in green tea and Chrysantium Flower flavors, and also biscuit (mmmilk and roller).

2.2 Location

Vasa Hotel Surabaya was built at West Surabaya, situated close to city's highway, the biggest shopping center and golf course.



Picture 1. Location of Vasa
(Source : Anonymous, 2018)

2.3 Vision and Mission

Vision Statement :

“An Upscale-Modern Day Hotel with Exciting Guest Experience and Service at it Finest”

Mission Statement :

Redefining the traditional concept of 5 stars hotel hospitality through intuitive services, inspiring design, innovative culinary, experiences that touch the heart and soul of every guest.

2.4 Vasa Hotel Brand Value

The foundation of Values at Vasa Hotel consist of four points which underpin our philosophy and Company values and shape our working style and culture:

- Pleasure
- Passion
- Take the lead
- Inspiring

2.5 Features of Vasa Hotel Surabaya

Vasa Hotel Surabaya rated as five stars hotel. They offer the extraordinary and modern service. They have 388 rooms, suites & residence. They give modern touch into their contemporary look of design. Inspired by the cultural and artistic design of sophisticated arts, Vasa Hotel mixes business with pleasure and art with technology.

Besides the rooms, suites & residences, Vasa Hotel have many other features that worth for five stars hotel such as :

2.5.1 Hotel & Suites

Have 388 rooms with different types and sizes

1. Select Room

Enjoy yourself with the simple yet elegance 32 m² select room. Select room featuring King or Twin Bed with astonishing city view and equipped with luxury room amenities, 43” high-definition LED television with various channels, high-definition audio speaker by Harman Kardon, high-speed wireless connection, rain shower and spacious marble bathroom for your relaxations.

Room amenities :

- Mini Bar
- Daily local and international newspaper
- In-room safe deposit box
- Marble Bathroom
- Rain Shower
- Writing Desk
- Free mineral bottle and coffee

Room Features :

- Modern interiors with touch of contemporary arts
- City view
- Enhanced Bathroom amenities
- Complimentary access to Health Club (including swimming pool)
- Floor to ceiling windows
- Double-glazed windows
- Refreshment center

Technology :

- High-speed wireless internet connection
- 43-inch LED Television
- Interactive high-definition audio by Harman Kardon



Picture 2. Twin bed select room
(Source : Vasa Hotel Surabaya, 2018)



Picture 3. Bathroom
(Source : Vasa Hotel Surabaya, 2018)

2. Premium Room

Vasa hotel's 32 m² Premium Room has the same layout as the select room, the difference is Premium Room has a higher floor. Premium room featuring King or Twin Bed with astonishing city view and equipped with luxury room amenities, 43' LED TV with various channels, elegant working desk, high-definition audio by Harman Kardon, high-speed Wi-Fi connection, rain shower and spacious marble bathroom for you relaxations.

Room amenities :

- Mini Bar
- Daily local and international newspaper
- In-room safe deposit box
- Marble Bathroom
- Rain Shower
- Writing Desk
- Free mineral bottle and coffee

Room Features :

- Modern interiors with touch of contemporary arts
- City view
- Enhanced Bathroom amenities
- Complimentary access to Health Club and Spa facilities (including Swimming pool)
- Floor to ceiling windows
- Double-glazed windows
- Refreshment center

Technology :

- High-speed wireless internet connection
- 43-inch LED Television
- Interactive high-definition audio by Harman Kardon



Picture 4. Premium Room
(Source : Vasa Hotel Surabaya, 2018)

3. Executive Room

Executive Rooms has the same size which is 32 m² the same layout and features as the Premium Rooms. The Executive room is located on 31st and 32nd floors, offering breathtaking views over Surabaya and enjoy the complimentary Executive Club Lounge access while staying in our Executive Room. Benefits include private check-in and check-out, breakfast, all-day coffee & tea, also social hour at 06.00 pm - 08.00 pm.

Room amenities :

- Mini Bar
- In-room safe deposit box
- Marble Bathroom
- Rain Shower
- Writing Desk
- Free mineral bottle and coffee
- Shoeshine service
- Daily local and international newspaper

Room Features :

- Modern interiors with touch of contemporary arts
- Enhanced Bathroom amenities
- Complimentary access to Flex & Fit Health Club
- Floor to ceiling windows with city view
- Double-glazed windows
- Refreshment center
- One king bed or twin beds
- Complimentary access to Executive Club Lounge inclusive breakfast, all-day coffee & tea, also social hour at 06.00 pm - 08.00 pm available buffet and selection of cocktails & mocktails
- One hour free usage of meeting room per day at Executive Club Lounge Boardroom subject to prior reservation and availability
- Complimentary pressing of 1 suit or dress, or 2 pieces of shirts per stay, or 2 pieces of laundry per room per day

Technology :

- High-speed wireless internet connection
- 43-inch LED Television
- Interactive high-definition audio by Harman Kardon



Picture 5. Executive Room
(source :Vasa Hotel Surabaya,2018)

4. Glacier Suite

Glacier suite spacious 64 m² Glacier Suites is located on the 32nd to 36th floor, offering panoramic views over Surabaya. These suites have a separate living area, a luxurious bathroom with a shower and a bath as well as a wide range of selected amenities. Enjoy the complimentary Executive Club Lounge access during your stay. Benefits include private check-in and check-out, breakfast, all-day coffee & tea, also social hour at 06.00 pm - 08.00 pm.

Room amenities :

- Mini Bar
- In-room safe deposit box

- Marble Bathroom
- Rain Shower
- Writing Desk
- Free mineral bottle and coffee
- Shoeshine service
- Daily local and international newspaper

Room Features :

- Modern interiors with touch of contemporary arts
- Enhanced Bathroom amenities
- Complimentary access to Flex & Fit Health Club
- Floor to ceiling windows with city view
- Double-glazed windows
- Refreshment center
- Deep soaking bathtub with LED television
- One king bed
- Complimentary access to Executive Club Lounge inclusive breakfast, all-day coffee & tea, also social hour at 06.00 pm - 08.00 pm available buffet and selection of cocktails & mocktails
- One hour free usage of meeting room per day at Executive Club Lounge Boardroom subject to prior reservation and availability
- Complimentary pressing of 1 suit or dress, or 2 pieces of shirts per stay, or 2 pieces of laundry per room per day

Technology :

- High-speed wireless internet connection
- 43-inch LED Television
- Interactive high-definition audio by Harman Kardon



Picture 6. Glacier suite
(source : Vasa Hotel Surabaya ,2018)

5. Breccia Suite

Vasa Hotel expansive 70 m² Breccia Suite located in the 36th floor. Breccia Suite have a separate living area, a luxurious bathroom with a shower and a bath as well as a wide range of selected amenities that will provides some of the grandest accommodations for your extravagant stay. Enjoy the complimentary services to our Club Lounge and private butler service.

Room amenities :

- Mini Bar
- In-room safe deposit box
- Marble Bathroom
- Rain Shower
- Writing Desk
- Free mineral bottle and coffee
- Shoeshine service

- Daily local and international newspaper

Room Features :

- Modern interiors with touch of contemporary arts
- Enhanced Bathroom amenities
- King sized bed
- Complimentary access to Flex & Fit Health Club
- Floor to ceiling windows with city view
- Double-glazed windows
- Refreshment center
- Deep soaking bathtub with LED television
- Complimentary access to Executive Club Lounge inclusive breakfast, all-day coffee & tea, also social hour at 06.00 pm - 08.00 pm available buffet and selection of cocktails & mocktails
- One hour free usage of meeting room per day at Executive Club Lounge Boardroom subject to prior reservation and availability
- Complimentary pressing of 1 suit or dress, or 2 pieces of shirts per stay, or 2 pieces of laundry per room per day

Technology :

- High-speed wireless internet connection
- 43-inch LED Television
- Interactive high-definition audio by Harman Kardon



Picture 7. Breccia Suite
(Source : Vasa Hotel Surabaya, 2018)

6. Royal Suite

The Royal Suite offer a wide range of luxury facilities and outstanding services for your convenience staying at Vasa. This 128 m² suite is located on the top floor of the hotel, offering breathtaking views over Surabaya. Complimentary access to Executive Club Lounge inclusive breakfast, all-day coffee & tea, also social hour at 06.00 pm - 08.00 pm.

Room amenities :

- Mini Bar
- In-room safe deposit box
- Marble Bathroom
- Rain Shower
- Writing Desk
- Free mineral bottle and coffee
- Shoeshine service
- Daily local and international newspaper

Room Features :

- Modern interiors with touch of contemporary arts
- Enhanced Bathroom amenities
- King sized bed
- Complimentary access to Flex & Fit Health Club
- Floor to ceiling windows with city view
- Kitchenette with Butler Service
- Double-glazed windows
- Dining room
- Refreshment center
- Deep soaking bathtub with LED television
- Complimentary access to Executive Club Lounge inclusive breakfast, all-day coffee & tea, also social hour at 06.00 pm - 08.00 pm available buffet and selection of cocktails & mocktails
- One hour free usage of meeting room per day at Executive Club Lounge Boardroom subject to prior reservation and availability
- Complimentary pressing of 1 suit or dress, or 2 pieces of shirts per stay, or 2 pieces of laundry per room per day

Technology :

- High-speed wireless internet connection
- 43-inch LED Television
- Interactive high-definition audio by Harman Kardon



Picture 8. Royal Suite
(source : Vasa Hotel Surabaya, 2018)

7. Presidential Suite

A stunning sophisticated design welcomes you within the Presidential Suite, the curated artwork creates a sense of private, residence-style sophistication. This 192 m² suite accented with elegant design with large floor-to-ceiling windows that flood the space with natural light that continues into the in-room swimming pool with breathtaking city views of this bespoke. Enjoy the complimentary Executive Club Lounge access during your stay. Benefits include private check-in and check-out, breakfast, all-day coffee & tea, also social hour at 06.00 pm - 08.00 pm.

Room amenities :

- Mini Bar
- In-room safe deposit box
- Marble Bathroom
- Rain Shower
- Writing Desk
- Free mineral bottle and coffee
- Shoeshine service

- Daily local and international newspaper

Room Features :

- Modern interiors with touch of contemporary arts
- Enhanced Bathroom amenities
- Separated living room and bed room
- King sized bed
- Complimentary access to Flex & Fit Health Club
- Floor to ceiling windows with city view
- Kitchenette with Butler Service
- Double-glazed windows
- Dining room
- Refreshment center
- Deep soaking bathtub with LED television
- Complimentary access to Executive Club Lounge inclusive breakfast, all-day coffee & tea, also social hour at 06.00 pm - 08.00 pm available buffet and selection of cocktails & mocktails
- One hour free usage of meeting room per day at Executive Club Lounge Boardroom subject to prior reservation and availability
- Complimentary pressing of 1 suit or dress, or 2 pieces of shirts per stay, or 2 pieces of laundry per room per day

Technology :

- High-speed wireless internet connection
- 43-inch LED Television
- Interactive high-definition audio by Harman Kardon



Picture 9. Presidential Suite
(Source : Vasa Hotel Surabaya , 2018)

8. Apartment

First-class residences with an added personal touch, characterize Vasa Residences which have been developed with both long-term guests and families in mind. Offering a blend of extravagant and timeless design, Vasa Residences boasts of 48 fully furnished luxury serviced residences that combine hotel-like amenities and the conveniences of a home in an elegant environment design, providing a haven for relaxation and privacy while affording a range of extravagant indulgences in a safe, exclusive and protected setting.

There are three types of apartment at Vasa Residence :

a. 1 Bedroom Apartment

Design with a comfort of home, our one-bedroom residence offer modern layouts with over-sized windows that bathe the room in natural light and offer city views of Surabaya. Marble floors bring the simplicity yet elegant looks while glass-enclosed marble bathrooms feature a rain shower and stunning bath amenities.



Picture 10. Living room 1
(Source : Vasa Hotel Surabaya, 2018)



Picture 11. Master bedroom 1
(source : Vasa Hotel Surabaya , 2018)

Apartment amenities :

- Coverage Parking
- High-end kitchen appliances
- Air-conditioning
- Daily local and international newspaper
- In-room safe deposit box

- Marble Bathroom
- Rain Shower
- Shoeshine Service
- Work Desk
- Weekly amenities of food
- Complimentary 1 gallon of mineral water
- Hairdryer

Room Features :

- Separated Living Room
- Dining Area for 2 persons
- Full kitchenette including kitchen utensils
- Master bedroom with King size bed
- Elegant marble bathroom
- Complimentary access to Executive Club lounge inclusive breakfast, all-day coffee & tea, also social hour at 06.00 pm - 08.00 pm available buffet and selection of cocktails & mocktails
- One hour free usage of meeting room per day at Executive Club Lounge Boardroom subject to prior reservation and availability
- Bedside and desk telephone, with in-dial numbers
- Tea & coffee making facilities and refrigerator

Technology :

- High-speed wireless internet connection
- 43-inch LED Television

b. 2 Bedroom Apartment

Boasting a living room, a kitchen, a dining area, and two bathrooms, this 100 square meters large apartment is ideal for families or for those who enjoy more space. Experience personalized service with access to our Executive Club Lounge during your stay, inclusive breakfast, all-day coffee & tea, and social hour at 06.00 pm - 08.00 pm. Whether travelling single or with friends or family, 2-bedroom apartments is the perfect choice offering spacious fully self-contained apartment accommodation.

Apartment amenities :

- Coverage Parking
- High-end kitchen appliances
- Air-conditioning
- Daily local and international newspaper
- In-room safe deposit box
- Marble Bathroom
- Rain Shower
- Shoeshine Service
- Work Desk
- Weekly amenities of food
- Complimentary 1 gallon of mineral water
- Hairdryer

Room Features :

- Separated Living Room
- Dining Area for 4 persons
- Full kitchenette including kitchen utensils
- One king bed and twin bed
- Elegant marble bathroom

- Complimentary access to Executive Club lounge inclusive breakfast, all-day coffee & tea, also social hour at 06.00 pm - 08.00 pm available buffet and selection of cocktails & mocktails
- One hour free usage of meeting room per day at Executive Club Lounge Boardroom subject to prior reservation and availability
- Bedside and desk telephone, with in-dial numbers
- Tea & coffee making facilities and refrigerator

Technology :

- High-speed wireless internet connection
- 43-inch LED Television



Picture 12. Twin bed 2
(Source : Vasa Hotel Surabaya, 2018)

c. 3 Bedroom Apartment

The 3-Bedroom Apartment is fully furnished and fitted with a king-size bed in the first bedroom, offering a comfortable space for two guests. Another four guests can be housed in the second and third bedroom with four single beds. The living and dining area is perfect to relax in or to entertain. A fully equipped

kitchen invites all home cooks to whip up a meal to enjoy a cozy night in, while complimentary Wi-Fi, air-conditioning and housekeeping are also included to make your stay a most comfortable one.

Apartment amenities :

- Coverage Parking
- Dishwasher in unit
- High-end kitchen appliances
- Air-conditioning
- Daily local and international newspaper
- In-room safe deposit box
- Marble Bathroom
- Rain Shower
- Writing Desk
- Complimentary 1 gallon of mineral water

Room Features :

- Spacious Living Room
- Dining Area for 6 persons
- Full kitchen including dishwasher and kitchen utensils
- Master bedroom with King size bed, 2nd and 3rd bedroom with Twin bed
- Elegant marble bathroom
- Bedside and desk telephone, with in-dial numbers
- Tea & coffee making facilities and refrigerator
- In-room safe deposit box
- Hairdryer

Technology :

- High-speed wireless internet connection
- 43-inch LED Television



Picture 13. Master bedroom 3
(Source : Vasa Hotel Surabaya, 2018)



Picture 14. Living Room 3
(Source : Vasa Hotel Surabaya, 2018)

2.5.2 Dining and Lounge

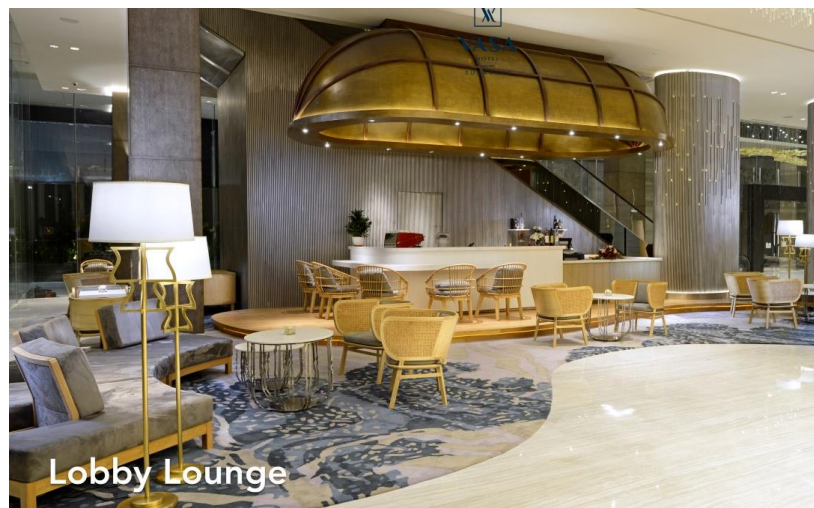
a. Lobby Lounge

The effortless style and elegance of our Lobby Lounge make it the perfect spot for unwinding with colleagues or catching up with friends. Savor an extensive cocktail and wine selection along with delicious pastries .It is located at our Lobby level.

- With 45 seating capacity.

Operational hour:

- 07:00 a.m. to 01:00 a.m.



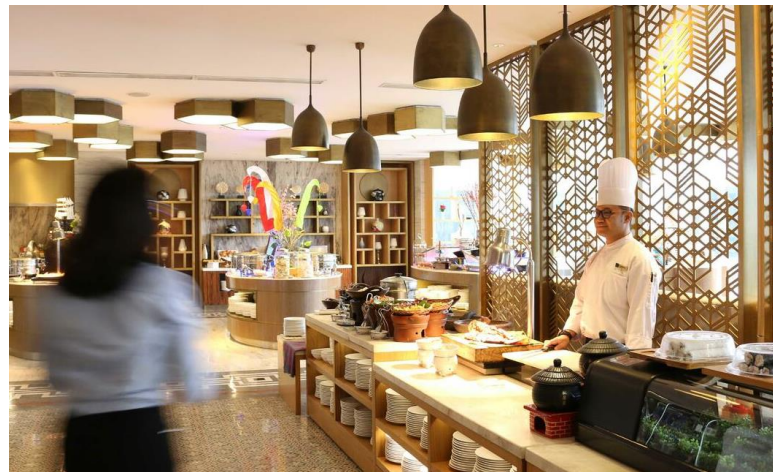
Picture 15. Lobby Lounge
(Source : Vasa Hotel Surabaya, 2018)

b. 209 Dining

This relaxed restaurant is designed to offer a casual yet sophisticated dining experience. Start your day with a delicious buffet breakfast and enjoy a wide variety of dishes for banqueting lunches and dinners. 209 Dining is open daily and offers an International buffet on select days.

Operational hour:

- Breakfast Buffet (weekdays) : 06.00 – 10.00
- Breakfast Buffet (weekend) : 06.00 – 10.30
- A la Carte (daily) : 11.30 – 22.30
- Lunch : 12.00 – 15.00
- Dinner : 18.00 – 22.00



Picture 16. 209 Dining
(Source :Vasa Hotel Surabaya, 2018)



Picture 17. 209 Dining 2
(Source : Vasa Hotel Surabaya, 2018)



Picture 18 . 209 Dining 3
(Source: Vasa Hotel Surabaya, 2018)

c. Xiang Fu Hai Chinese Restaurant

At Xiang Fu Hai, the culinary team is strive to bring you the healthiest, freshest and most authentic Chinese and Cantonese cuisine. The dishes are prepared with the best ingredients, detail preparation and a years of experience to create the finest cuisines. Xiang Fu Hai open daily during lunch and dinner time. Dim Sum available every Sunday & Public Holiday.

- It is located on 6th floor.
- With 200 seating capacity.

Operational Hour:

- Monday – Saturday : 11.30 a.m to 10.30 p.m
- Sunday : 08.00 a.m to 10.30 p.m
- Public Holidays: 09:00 a.m. to 10:30 p.m.



Picture 19. Xiang Fu Hai
(Source : Vasa Hotel Surabaya, 2018)

d. Chamas Restaurant & Bar

The first Brazilian Churrascaria Restaurant in Surabaya where the new dining concept of the Brazilian Steak house with unlimited high-quality meat; 17 varieties of beef, lamb, and chicken as well as excellent beverage selections are served. Each meat has been seasoned with sea rock salt the authentic South American way and slow-roasted over an open flame. The menu will be served by the attentive service team in Gaucho costume (South Brazilian local ranchers) where they will move from table to table, carry and slice portions of unlimited meat skewers.

Operational Hour:

- **Lunch:** 11.30 a.m. - 03.00 p.m.
- **Dinner:** 06.00 p.m. - 10.30 p.m.



Picture 20. Chamas Churrascaria Restaurant
(Source : Vasa Hotel Surabaya, 2018)

e. Ballroom and Pre-Function Hall

Ballroom and Pre-Function Hall is usually used as wedding party, birthday party, ceremony, or big meeting, Vasa Grand Ballroom is divided into 2 rooms, with total capacity for 2000 of guests.



Picture 21. Vasa Grand Ballroom 1
(Source : anonymous , 2018)



Picture 22. Vasa Grand Ballroom 2
(Source : Anonymous, 2017)



Picture 23. Prefunction Hall 1
(Source : Anonymous, 2018)

f. Aviosa Wedding Chapel

Vasa offers unique way to deliver your wedding dreams, they have chapel in their 5th floor called Aviosa, become one of the intimate wedding venues in Surabaya, offer stunning new elegance hotel offers a sophisticated backdrop for your celebration



Picture 24 . Aviosa Chapel
(Source : TripAdvisor, 2018)

g. Meeting & Conferences Room

These meeting room are placed on 4th floor, and have 6 rooms in total which is Coral 1, Coral 2, Coral 3, Tasman, Carribean, and Weddell.

Meeting & Conference service :

- High-speed wireless internet access
- Spacious Pre-Function Room
- Professional Meeting Planners
- Innovative Culinary teams
- Built-in Audio Visual
- In-house IT and Maintenance Service



Picture 25 . Meeting Room
(Source : Vasa Hotel Surabaya, 2018)

h. Infinity Swimming Pool

Located at 5th floor, our outdoor swimming pool is the perfect venue to simply enjoy a refreshing dip which is available exclusive for our hotel guests. Four comfortable sofa in pool side will provide an interesting twist to this unique outdoor space. Our adult pool is 1.5m depth and our kids pool is 0.8m depth. But in here, there's no lifeguard on duty at swimming pool area, so they hope that all of guest to swim with responsibility of themselves.

Open Hours : 05.00 – 21.00.



Picture 26. Swimming Pool
(Source : Vasa Hotel Surabaya, 2018)

i. Spa

They believe that a balance between exertion and relaxation is the key to achieving a feeling of inner tranquility and rejuvenation. The professional therapist will guide you a treatment to rediscover mental, physical, and spiritual harmony, leaving you feeling enlivened and transformed



Picture 27. Tangerine Spa
(Source : Vasa Hotel Surabaya, 2018)

j. Fitness Center

Taking a break from your daily routine does not have to mean taking a break from your exercise routine. Travel and fitness can work together to create a happier and healthier. Maximize your stay when you use our state-of-the-art fitness equipment in Flex & Fit. Fitness Center is located at 5th floor.



Picture 28. Fitness Center
(Source : Vasa Hotel Surabaya, 2018)

k. Kids Playground

Children Playground located at 5th floor, is featuring games, toys, and enriching activities to give parents complete peace of mind. Children must use socks in our Playground area and supervise by adult.

Open daily on 10.00 – 20.00



Picture 29. Kids Playground
(Source : Vasa Hotel Surabaya, 2018)

l. Helicopter Landing Pad

Vasa Hotel is the first five stars hotel in Surabaya that provide helicopter landing pad in the top floor, the 36th the very top of Vasa Hotel Surabaya.

- m. Free internet access for all area hotel (Wi-Fi)
- n. 24 hours service
- o. Executive Lounge

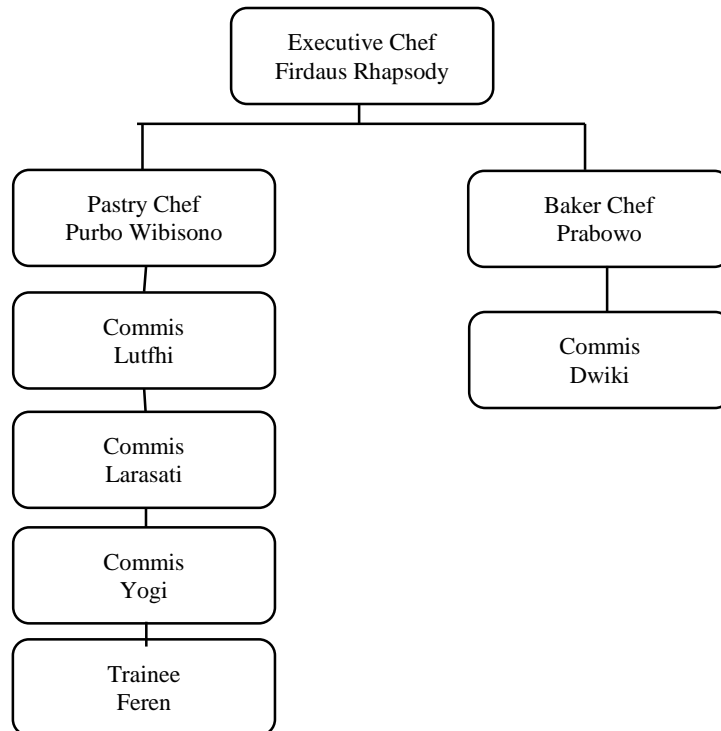
This lounge located at the 33rd floor and is opened daily from 06.00 AM to 08.00 PM. Exclusively designed for our discerning guests who desire more personalized service, greater privacy, luxurious guest rooms and suites, and distinctive amenities to make their stay.



Picture 30. Executive Lounge
(Source : Vasa Hotel Surabaya, 2018)

2.6 Organizational Structure and Main Task

2.6.1 Organizational Structure



Picture 31. Kitchen Organization

2.6.2 Kitchen Department Main Task

a. Executive Chef

- Creating standards for each kitchen department
- Control and overview the quality of products
- Doing audit for making sure hygiene and sanitation all around kitchen.
- Overview products before launching new products.
- Calculating all costing including food cost and wastage.

b. Pastry Chef & Baker Chef

- Creating new pastries recipe for launching.
- Make sure all set up for breakfast, lunch or dinner is organized.
- Making sure all kitchen staff and trainees are well trained.
- Making schedule monthly for all staff.
- Checking hygiene and sanitation standards.
- Performing all administrative task.

c. Commis

- Doing all daily production for operational.
- Making sure all set up are based on standards.
- Making sure all food preparation meets the standards.
- Making order of ingredient stock weekly through Pastry chef or Baker Chef.
- Trained all trainees during food preparation process.
- Checking all quality of food inside or outside the chiller.

d. Trainee

- Following standards for all food preparation.
- Helping all staff for doing job task.
- Keep all area is sanitized and clean
- Help to serving food to guest during breakfast, lunch and dinner
- Help preparing food and condiments for breakfast, lunch and dinner.